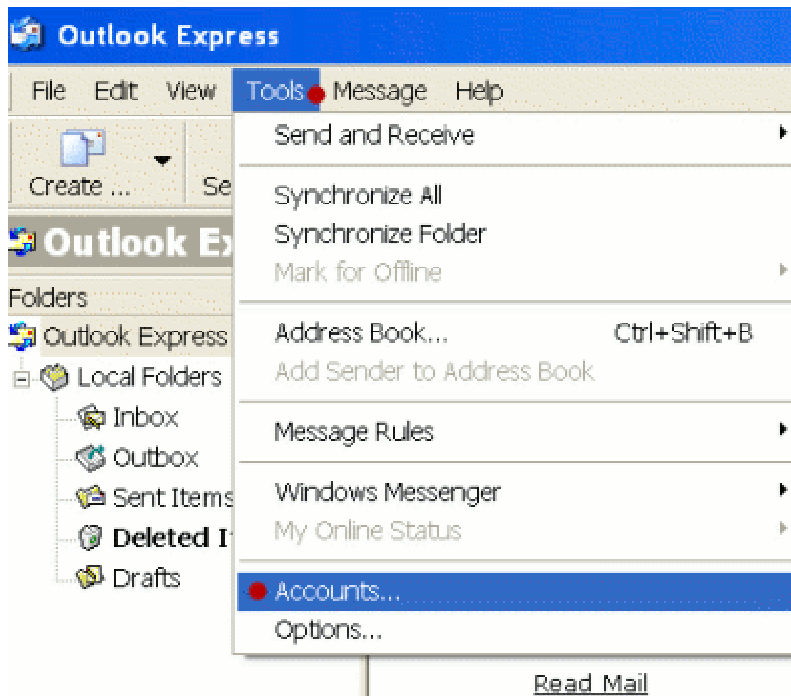


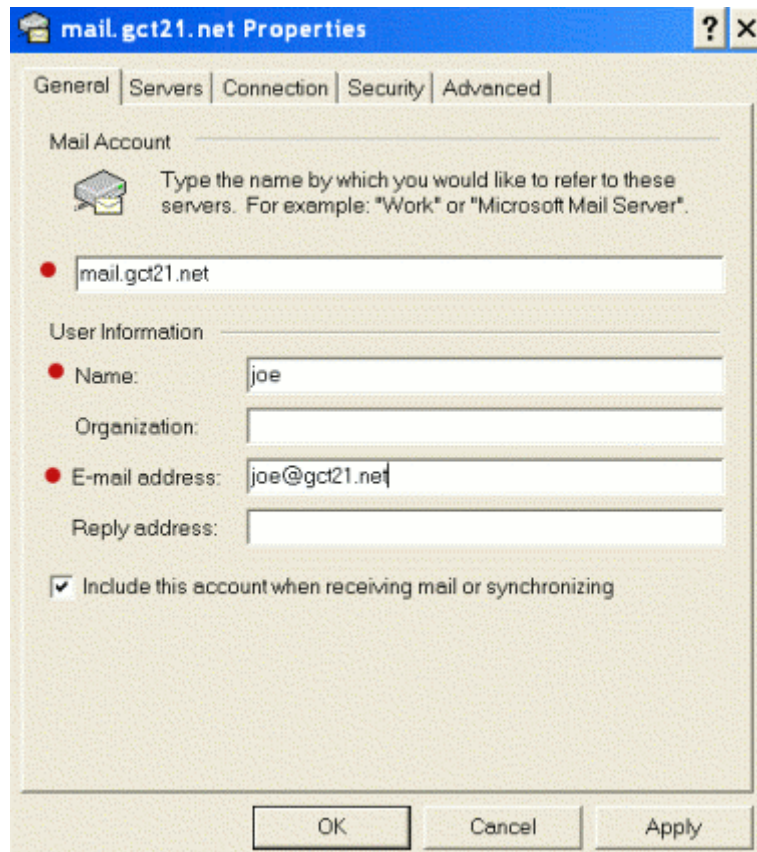
Outlook Express Set Up by Connectto

NOTE: After making changes on each screen be sure to click “APPLY” so the changes you made will stay

Open Outlook Express
Click On TOOLS
Click On ACCOUNTS

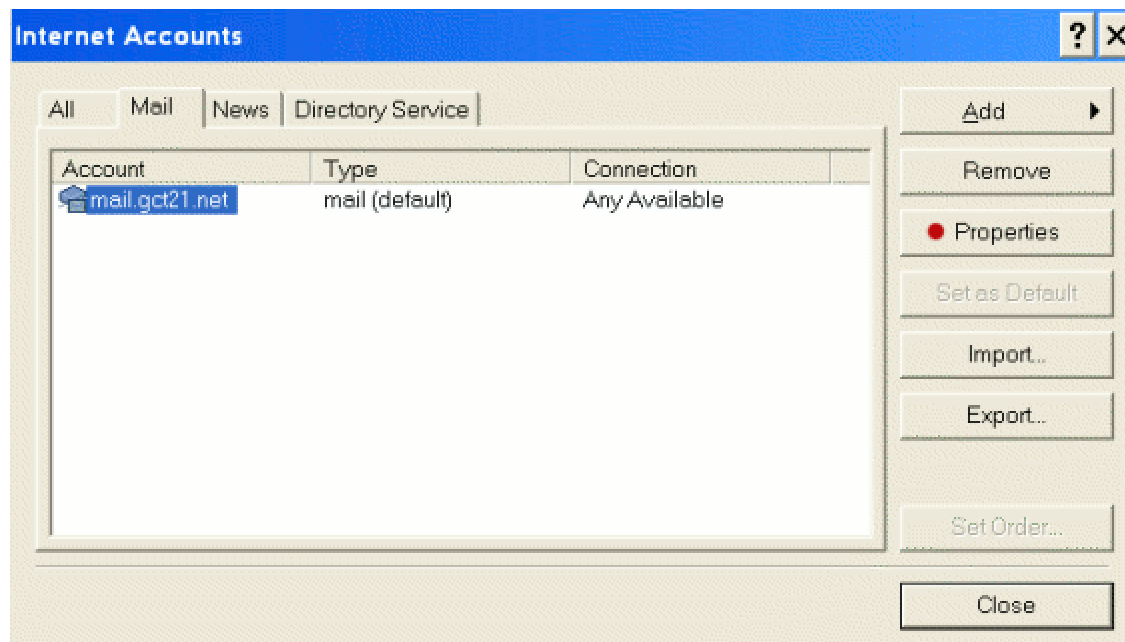


Under the GENERAL TAB



Fill in the spaces with your user information

Click On the MAIL TAB



Make sure your email account with us is highlighted then click on PROPERTIES

Click on the SERVERS TAB



Make sure the incoming is mail.gct21.net and the outgoing is smtp.gct21.net

If you have a TLD dial up log in-example joe#tld@k.56k.cc

please use the IP address- 66.224.20.6 for both incoming and outgoing mail servers

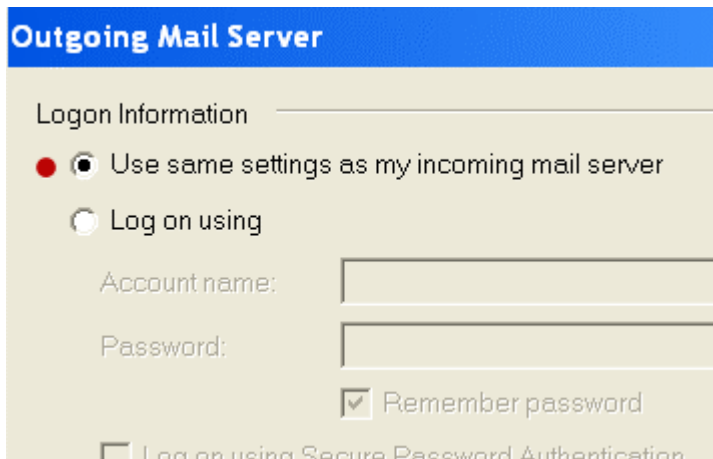
The account name is the first part of your email address only, not @gct21.net.

EXAMPLE:

joe@gct21.net is the email address but you would only enter joe and your password.

Make sure that "my server requires authentication" is checked.

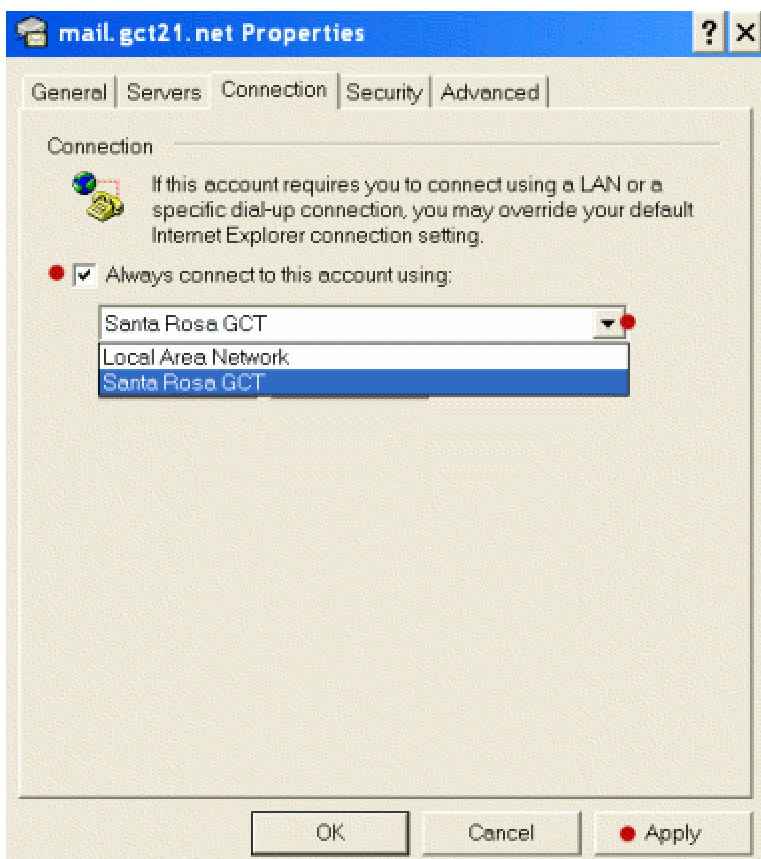
Click on SETTINGS



Make sure "USE SAME SETTINGS AS MY INCOMING SERVER" is checked.
Click OK

Now Click on CONNECTON

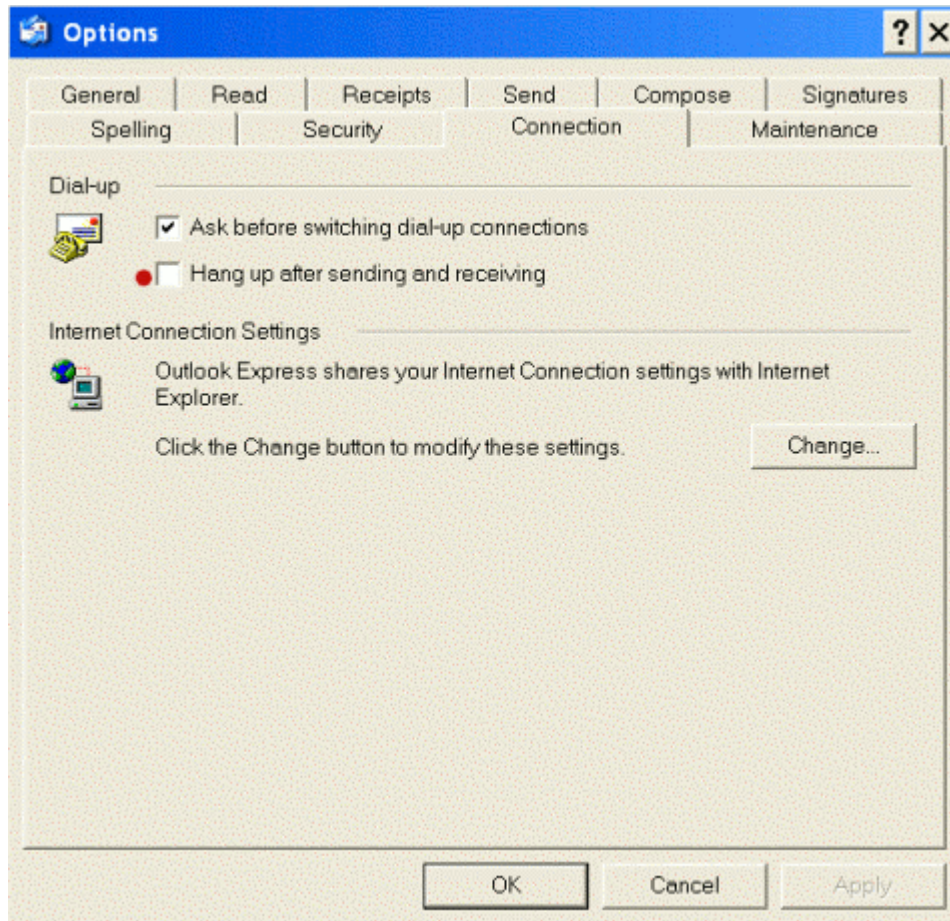
Be sure to choose the connection you want to use from the drop down box



You are now finished with this part of the set up and should either click OK or APPLY on each window

One more thing to check
Go back to TOOLS

OPTIONS CONNECTION



Make sure "HANG UP AFTER SENDING AND RECEIVING" is NOT checked

You are now finished setting up your mail

If you require further assistance with your Outlook Express program you will need to visit the Microsoft website. www.microsoft.com