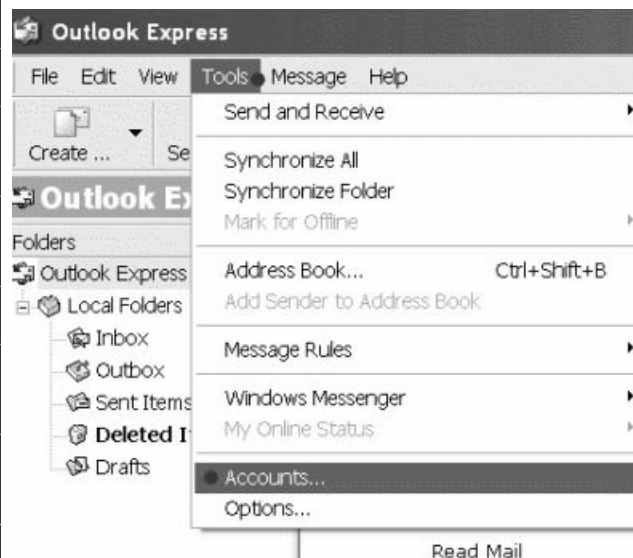


[Home](#)[Affiliate Back Office](#)[FAQ's](#)[Tips](#)[System Messages](#)[Troubleshooting](#)[E Mail Help](#)[Internet Explorer  
Errors](#)[Free Affiliate  
Program](#)[Set Up Instructions](#)[Lookup phone  
numbers](#)[Change EMail  
Password](#)[Webmail](#)[Free Anti Virus](#)[Free Security Tools](#)[Spyware Information](#)[Free Spam  
Information](#)[Blog](#)

# Outlook Express Set Up by Connectto

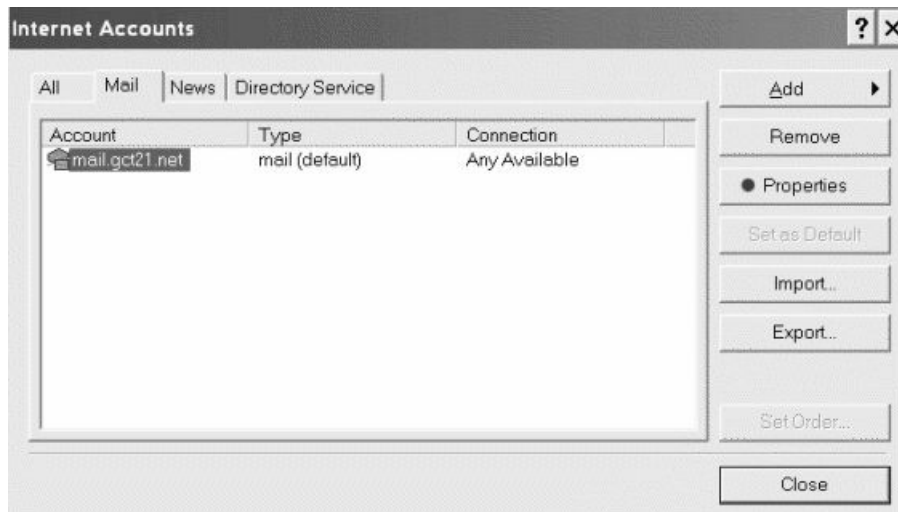
Open Outlook Express  
Click On TOOLS  
Click On ACCOUNTS



Under the GENERAL TAB



Fill in the spaces with your user information  
Click On the MAIL TAB



Make sure your email account with us is highlighted  
then click on PROPERTIES  
Click on the SERVERS TAB



Make sure the incoming is mail.gct21.net and the outgoing is smtp.gct21.net

If you have a TLD dial up log in-example joe#tld@k.56k.cc  
please use the IP address- 66.224.20.6 for both incoming  
and outgoing mail servers

The account name is the first part of your email address only,  
not @gct21.net.

EXAMPLE:

joe@gct21.net is the email address but you would only enter joe  
and your password.

Make sure that "my server requires authentication" is checked.

Click on SETTINGS



**Outgoing Mail Server**

Logon Information

☒ Use same settings as my incoming mail server

☐ Log on using

Account name:

Password:

☒ Remember password

☐ Log on using Secure Password Authentication

Make sure "USE SAME SETTINGS AS MY INCOMING SERVER" is checked.

Click OK

Now Click on CONNECTON

Be sure to choose the connection you want to use from the drop down box



**mail.gct21.net Properties**

General | Servers | Connection | Security | Advanced

Connection

☒ If this account requires you to connect using a LAN or a specific dial-up connection, you may override your default Internet Explorer connection setting.

☒ Always connect to this account using:

Santa Rosa GCT

Local Area Network

Santa Rosa GCT

OK Cancel Apply

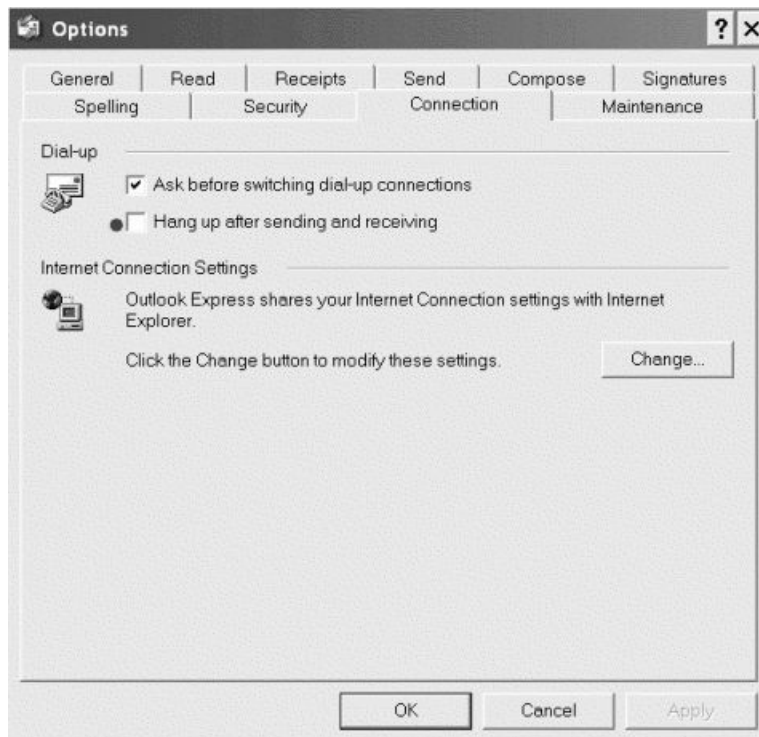
You are now finished with this part of the set up and should either click OK or APPLY on each window

One more thing to check

Go back to TOOLS

OPTIONS

CONNECTION



Make sure "HANG UP AFTER SENDING AND RECEIVING" is NOT checked

### **You are now finished setting up your mail**

[Microsoft Help Pages For Outlook](#)

[Outlook Express Frequently Asked Questions](#)

[Outlook Express 5 How-To Guide](#)

[Back to FAQ's](#)